

# Jasper.

Industrial furnace engineering. Independent. Worldwide.





# SCHMELZOFEN

### Verbrennungsluft

Druck Sens. Verbrennungsluft: 7,8 mbar | 7,6 mbar

Parameter	Value
Sollwert min	1200 rpm
Sollwert max	2750 rpm
SW Regler	2216 rpm
SW aktuell	2118 rpm

Mode	SW Min	SW Max	SW Hand	SW Regler	SW aktuell
AUTO	35 %	70 %	50 %	58 %	74 %
HAND	35 %	70 %	50 %	58 %	74 %

### Saugzug

Faktor: 0,55

Offsetdruck: 92,00 mmHg | 91,84 mmHg

Parameter	Value
Korrektur nach Offsetdruck	0,00
Offset Druck min	33,5 %
Offset Druck max	0,00
Druckkorrektur	0,00
Faktor mit Druckkorrektur	0,55
Korrektur nach Abgastemperatur	170 °C
Abgastemperatur	220 °C
Temp. Anfang	340 °C
Temp. Ende	7,00
Temperaturkorrektur	0,00
Faktor mit Druck- und Temperaturkorrektur	0,55

### Saugzugklappe

Parameter	Value
Sollwert min	600 rpm
Sollwert max	1420 rpm
Sollwert Regler	1213 rpm
Sollwert aktuell	1213 rpm

Mode	SW Min	SW Max	SW Hand	SW Regler	SW aktuell
AUTO	27 %	60 %	75 %	74 %	74 %
HAND	27 %	60 %	75 %	74 %	74 %

### Brenner 6

Freigabe des Brenners für die Regelung

Mode	SW Min	SW Max	SW Hand	SW Regler	SW aktuell
AUTO	5,0 %	33,0 %	87,0 %	40,0 %	52,7 %
HAND	5,0 %	33,0 %	87,0 %	40,0 %	52,7 %

Mode	SW Min	SW Max	SW Hand	SW Regler	SW aktuell
AUTO	35 %	55 %	40 %	38 %	37 %
HAND	35 %	55 %	40 %	38 %	37 %

### Brenner 5

Freigabe des Brenners für die Regelung

Mode	SW Min	SW Max	SW Hand	SW Regler	SW aktuell
AUTO	5,0 %	33,0 %	87,0 %	40,0 %	52,7 %
HAND	5,0 %	33,0 %	87,0 %	40,0 %	52,7 %

Mode	SW Min	SW Max	SW Hand	SW Regler	SW aktuell
AUTO	34 %	55 %	40 %	38 %	38 %
HAND	34 %	55 %	40 %	38 %	38 %

### Brenner 4

Freigabe des Brenners für die Regelung

Mode	SW Min	SW Max	SW Hand	SW Regler	SW aktuell
AUTO	5,0 %	33,0 %	87,0 %	40,0 %	52,7 %
HAND	5,0 %	33,0 %	87,0 %	40,0 %	52,7 %

Mode	SW Min	SW Max	SW Hand	SW Regler	SW aktuell
AUTO	33,0 %	67,0 %	40,0 %	52,7 %	53,9 %
HAND	33,0 %	67,0 %	40,0 %	52,7 %	53,9 %

### Brenner 3

Freigabe des Brenners für die Regelung

Mode	SW Min	SW Max	SW Hand	SW Regler	SW aktuell
AUTO	5,0 %	33,0 %	87,0 %	40,0 %	52,7 %
HAND	5,0 %	33,0 %	87,0 %	40,0 %	52,7 %

Mode	SW Min	SW Max	SW Hand	SW Regler	SW aktuell
AUTO	34 %	55 %	40 %	38 %	38 %
HAND	34 %	55 %	40 %	38 %	38 %

### Saugzugklappe-Klappen

Mode	SW Min	SW Max	SW Hand	SW Regler	SW aktuell
AUTO	5 %	88 %	5 %	5 %	4 %
HAND	5 %	88 %	5 %	5 %	4 %

Mode	SW Min	SW Max	SW Hand	SW Regler	SW aktuell
AUTO	22 %	94 %	48 %	48 %	47 %
HAND	22 %	94 %	48 %	48 %	47 %

### Regelklappe Kühwasser 1

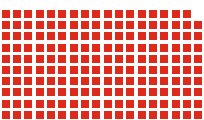
Mode	SW Min	SW Max	SW Hand	SW Regler	SW aktuell
AUTO	16 %	93 %	34 %	34 %	33 %
HAND	16 %	93 %	34 %	34 %	33 %

### Regelklappe Kühwasser 2

Mode	SW Min	SW Max	SW Hand	SW Regler	SW aktuell
AUTO	16 %	93 %	34 %	34 %	33 %
HAND	16 %	93 %	34 %	34 %	33 %

### Regelklappe Kühwasser 3

Mode	SW Min	SW Max	SW Hand	SW Regler	SW aktuell
AUTO	16 %	93 %	34 %	34 %	33 %
HAND	16 %	93 %	34 %	34 %	33 %



# Jasper. Focus on efficiency.

## The company.

Jasper is an owner-managed enterprise that develops highly specialised solutions for customers in the aluminium and steel industry as well as for local authorities. The focus of our activities is in industrial furnace engineering and firing systems, energy engineering as well as control systems and process control technology. We support customers worldwide from our three German locations.

In the last 30 years, we have managed to transform a small engineering company specialising in process engineering into a global technological leader. We were only able to do this by consistently aligning ourselves to the needs of our customers. And also because we always offer a holistic solution where the focus is on efficiency – in energy, economic and environmental terms.

In addition to our core competencies, we have increasingly expanded our technologies into the field of waste management. We now have a portfolio that enables us to support you in all areas – from consulting and analysis to project planning and turnkey handover, and more beyond!

Our strengths lie firstly with the expertise of our engineers and secondly in the reliability of our figures. We always work with authentic (!) energy-consumption values. Only then you can calculate realistically.

Are you also interested in efficiency? Simply contact our experts for more information. We are looking forward to fulfill your needs.

**1983** Robert Jasper founded the company, which has been owner-operated ever since.

**1988** Launch of the PulsReg® – today a mature classic.

**1992** New: The PulsReg® Zentral, a system of two regenerators with any number of burners.

## Contact partners

- ➔ Industrial furnace engineering and firing systems  
Hans-Dieter Jasper | Branch office North  
Jörn Ludwig | Branch office North  
Thomas Bleh | Branch office West
- ➔ Energy engineering  
Robert Jasper | Head office
- ➔ Automation  
Julius Hvizdak | Head office
- ➔ Servicing of furnace systems  
Ole Jasper | Branch office North
- ➔ General inquiries / miscellaneous  
Peter Klatecki | Head office



Major performance – we develop individual products in any size.



# Jasper. Innovative products from a single source.

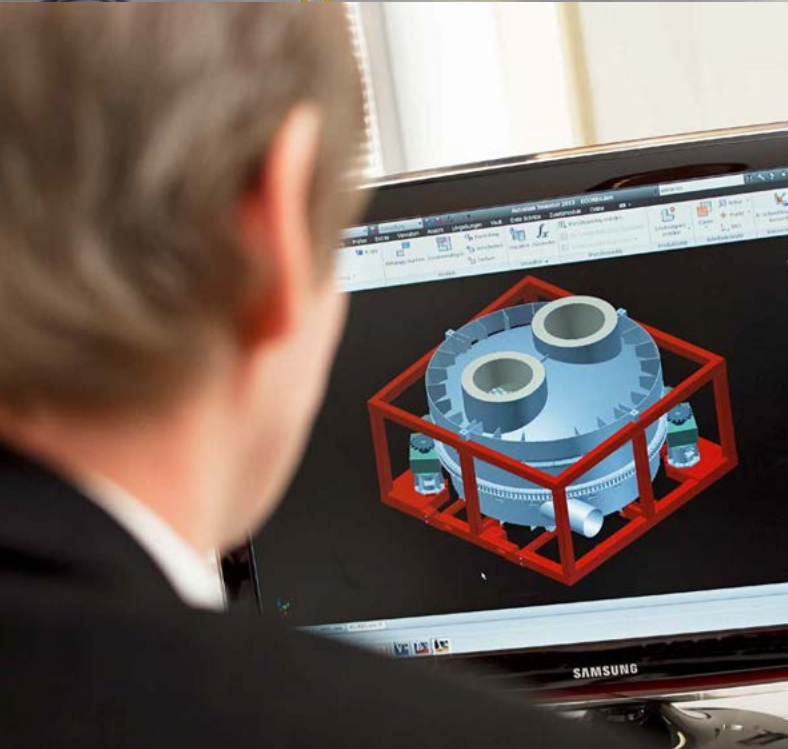
- ➔ **Industrial furnace engineering.** Global leader: We develop industrial furnaces and firing systems with regenerator technology for the most varied applications – customized turnkey solutions designed to customer specifications from a single source.
- ➔ **Regenerators.** Under control: Our rotating regenerators combine the advantages of recuperators with those of conventional regenerators – pure innovation.
- ➔ **Burner systems.** Fire and flame: We construct highly specialised burner systems for practically every industrial application – for gas, oil or coal dust fuels.
- ➔ **Casting systems.** As if made from one piece: We develop customised casting machinery for round billets and rolling ingots. Our innovative foundry technology enables us to offer maximum levels of surface quality.
- ➔ **Waste treatment.** Clean performance: We develop individual concepts for waste and soil treatment for energy production.
- ➔ **Energy engineering.** Cost reductions: As an independent partner, we can provide you with a neutral consulting service, and do everything possible to ensure optimum exploitation of your energy resources – and in turn reduce costs.
- ➔ **Service.** Servicing, repairs and modernising – our service personnel ensure that your furnace systems speedily and reliably correspond to the latest technological standards.



1994 Innovative development:  
Our rotary slide valve.

1996 EcoReg®: Development of  
rotating heat exchanger.

2001 New in the East – from now on  
Jasper is also represented in Russia.



Our wide range is based on solid know-how.

A decorative graphic consisting of a grid of small red squares, arranged in a pattern that tapers to the right.

# Jasper. Versatile system engineering solutions.

## Applications: Thermal metal treatment and waste treatment.

We offer a broad range of industrial furnaces and firing systems for the thermal treatment of metals. These specially developed and designed systems are extremely versatile for use in industry, for melting and smelting of metals as well as in procedural applications.

A further area of application is in thermal waste disposal. We develop individual concepts for waste and soil treatment for energy production. We work with the most appropriate technologies and processes, such as pyrolysis, hydro-thermal/sewage sludge treatment, soil treatment and waste incineration. Our goal is always to prepare the source materials as efficient and environmentally friendly as possible – and according to all legal emission guidelines.

You can count on our continued support even after implementation of your system. Our service for furnace systems means that you enjoy our competent support during maintenance work, repairs and conversion measures. Again, you benefit from our efficiency – through cost-effective spare parts, short delivery times and our know-how as a global technology leader.



## References

Our burner and furnace systems are in popular demand on an international level. Contact us if you would like an on-site inspection.

Our → contact partners will be more than happy to help you.

**2005** Scale up - Branch office North moves into a new building in Quickborn.

**2008** A reason to celebrate – our 25th anniversary.

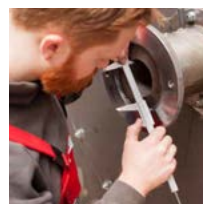
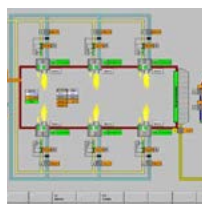
**2012** Opening of our own shop manufacturing.



# Jasper. At your service – worldwide.



Take advantage of our network – our branch offices can support you on-site.



Concept & Design: axel-boesten-plus-x.de • Paper: certified by FSC®

## Head office

Jasper GmbH

Energy consulting, energy technology and optimisation | Control systems and process control technology

Bönninghauser Straße 10  
59590 Geseke  
Germany

Tel. +49 (0)2942/9747-0  
Fax +49 (0)2942/9747-47

## Branch office North

Jasper GmbH

Industrial furnace engineering and firing systems

Robert-Bosch-Straße 20-24  
25451 Quickborn  
Germany

Tel. +49 (0)4106/8043-0  
Fax +49 (0)4106/8043-60

## Branch office West

Jasper GmbH

Sales, after-sales service

Leverkuser Strasse 65  
42897 Remscheid  
Germany

Tel. +49 (0)2191/69236-0  
Fax +49 (0)2191/69236-13

info@jasper-gmbh.de  
www.jasper-gmbh.de