

# Casting furnace GOe



## Electrically heated Holding and casting furnace

- Future-orientated design ensures a safe investment
- Zero CO<sub>2</sub> emissions due to electrical heating
- Fast alloy change through perfect furnace geometry



# Casting furnace GOe

## Holding and casting furnace

The casting furnace GO e is a hydraulically driven tilting furnace that is used for the preparation and post-treatment of aluminum. Designed primarily as a holding furnace, it can also be interpreted as a melting furnace. It is heated by an ecological, electric heating system, which is matched to the size of the furnace. The size of the furnace and bath capacity is variable – depending on requirements.

### Advantages

- Innovative design ensures a safe investment
- Economic operation  
The required power in KW per ton of aluminum is similar to that in hot air burner systems
- Environmentally friendly  
through CO<sub>2</sub>-neutral heating and through the low oxygen atmosphere inside the furnace
- Flexible  
through adaptable furnace geometry
- “Level Control”: Precise level control  
A constant level of liquid metal in the launder is ensured throughout the entire casting process, the casting spouts can also be arranged on the cleaning door side

### Less dross formation

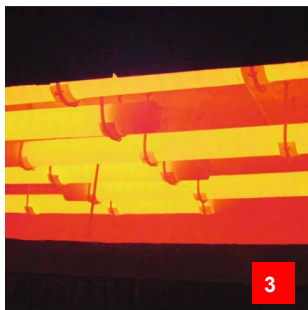
The casting furnace has a relatively low bath surface which reduces the formation of dross. The large bath access door facilitates drossing and skimming work.

### Best-quality metal

Each casting furnace can be equipped or retrofitted with the AluTreat® system bringing significant improvements in the metal quality. This system sees the floor of the bath lined with porous plugs that enable continuous treatment of the metal. The arrangement with AluTreat® is according to your needs and requirements.

### Programmable control

The system is controlled by a Siemens PLC, in which the entire system and all necessary data are visualised.



1. electrically heated casting furnace, 35t bath capacity
2. electrically heated casting furnace, 28t bath capacity
3. electrical heating
4. electrically heated casting furnace, 32t bath capacity

### An overview of our industrial furnace products:

- MultiMelter®
- EcoMelter® HSO / MSO / WSO
- Casting Furnace GO + GOe
- Rotary Drum Furnace DKO
- Charging
- AluTreat®

