

Rotary drum furnace DKO



Tiltable sample-melting furnace

- Perfected technology
- Detailed analysis of the scrap composition
- Analysis of the aluminum content of the scrap



Rotary drum furnace DKO

Tiltable sample-melting furnace

The rotary drum furnace is a tiltable sample-melting furnace. It is suitable for melting scrap, also for determining the composition of the scrap. The capacity of the furnace is 1,000 kg of liquid aluminum.

Efficient heating

Heating is carried out either with a gas-oxygen or gas-air burner, which is integrated into the oven door. The main burner is ignited by a pilot burner.

Safe disposal of waste gas

The design provides safe waste gas extraction at all times. With the furnace door closed, emissions are sucked through an exhaust pipe on the door connected to a vacuum system. With the furnace door open, a hood mounted on the furnace prevents any fugitive emissions escaping into the building.

Tilting, opening, closing

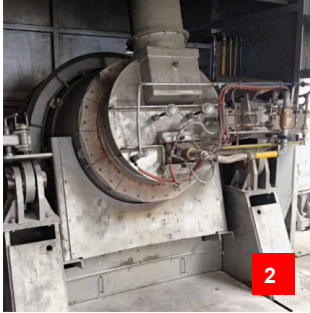
To empty the furnace, it is tilted. A cross plate that swings into the door opening holds back unwanted slag. Both the tilting of the furnace as well as the opening and closing of the door are carried out hydraulically. A central hydraulic unit controls the two cylinders for this purpose.

Drive, control and visualization

A revolving chain provides the drive for the rotating drum. A Siemens PLC performs the control of the entire furnace. This enables the operator to keep a close watch on the components and the operating data, as all data such as temperature and pressure are displayed on a visualization system.

Advantages:

- Perfected technology
- Precise analysis of the scrap composition
- Precise analysis of the aluminum content of the scrap
- Adhering organic contaminants are burnt off



1. Rotary drum furnace with the furnace door open
2. Rotary drum furnace
3. Rotary drum furnace during casting

An overview of our industrial furnace products:

- MultiMelter®
- EcoMelter®
- Casting furnace GO
- Rotary drum furnace DKO
- Charging
- AluTreat®
- Mobile burner system TW

